



PROGRESSIVE

LIGHTING & ELECTRICAL LTD.

LED PANELS | TROFFERS |
SUSPENDED LINEAR

LED PANELS | TROFFERS | SUSPENDED LINEAR



NOTE

- Our Showrooms are **NOT LIMITED** to these items displayed on the catalogue. Please free to visit any of our two locations nationwide to see these beauties and more lighting fixtures in real.
- Unable to match one of our flood lights to meet your requirements. Then contact us for further information.
- You can order your lighting fixtures to match your specific requirements.
- We can supply fixtures based on the Commercial Office Space, Private Offices, Health Care, Educational Facilities, Retail Merchandising Areas, Sports Lighting, Street Lighting, Parking Area Lighting, Vandal Resistant, Maximum Security, Harsh (Fire and Explosion) Environment, and Marine Grade.



2x2 EDGE LIT LED FLAT PANEL

Product No: J-PLD-22-40W-50A

Brand: Jesco

White Color

40W, 4600 Lumens

100-277V

Color Temperature 5000K

Size: 23.75" x 23.75"

Available Mounting Option Order Separately

- Surface Mount Kit
- Suspension Cable Kit

2x4 EDGE LIT LED FLAT PANEL

Product No: J-PLD-24-50W-50A

Brand: Jesco

White Color

50W, 4600 Lumens

100-277V

Color Temperature 5000K

Size: 47.75" x 23.75"

Available Mounting Option Order Separately

- Surface Mount Kit
- Suspension Cable Kit





PROGRESSIVE

LIGHTING & ELECTRICAL LTD.

**LED PANELS | TROFFERS |
SUSPENDED LINEAR**

2x4 TROFFER WITH ACRYLIC DIFFUSER

This item can be LED integrated or utilize LED \ Electronic Tubes

Brand: EATON | EIG

White Color with Acrylic Diffuser

120-277V

Size: 2ft x 4ft



2x2 TROFFER WITH ACRYLIC DIFFUSER

This item can be LED integrated or utilize LED \ Electronic Tubes

Brand: EATON | EIG

White Color with Acrylic Diffuser

120-277V

Size: 2ft x 2ft



EATON- METALUX RTC LED CENTER BASKET

Shallow plenum-under 2.5" deep RTC fits the most challenging space

Multiple Lumen package

Multiple lensing option

0-10V Dimming Standard

Different Color Temperatures Available

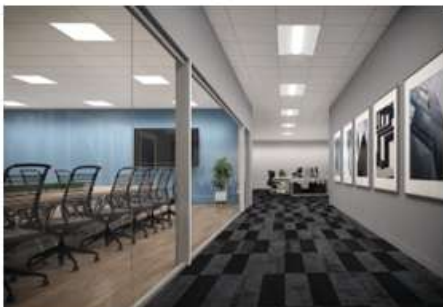
Emergency circuit Available

Integrated Sensor Available

Available in 1x4 , 2x2 x 2x4

Example: 24RTC-48-UNV-EL7W-L840-HCD-U

2X4 Recessed center N lensed troffer with dimming capabilities and emergency battery pack rated at 120-277V, 4000K, 4800lumens



EATON-NEO-RAY DEFINE SERIES LED RECESSED

Surface mount slot family in 2", 3", 4" and 5" housing size

Multiple Lumen package

Multiple lensing option

0-10V Dimming Standard

Different Color Temperatures Available

Emergency circuit Available

Customized Run Length Available

Multiple Ceiling Type Choices

Integrated Sensor Available

Can be suspended as well

Example: S122DR-S-865D840-ETG-4FO-1B1-UDD-F-W

4FT Direct Recessed Fixture with emergency battery pack- 120-277V, 4000K, 865lms/ft. Comes in white finish with Satin Flush Diffuser and dimmable.

EATON-CORELITE SUSPENDED LED DIRECT / INDIRECT

Available in 4', 8', 12' and continuous runs

Multiple Lumen package

Wide range of direct / indirect distributions

Different Color Temperatures Available

Dimming available

Emergency circuit Available

Multiple Ceiling Type Choices

Integrated Sensor Available

Example: CTA-F-7525-40L840-1D-UNV-STD-SWPD1-W-AC48-UM-8

8FT Direct/Indirect light with WaveLinX wireless integrated sensor-120-277V, 4000K, 4000lumens. Comes in white finish with frosted lens that distribute lighting 75% up and 25% down



**NOTE: You can order your lighting fixtures to match your
Specific Requirements and Environmental Conditions**